



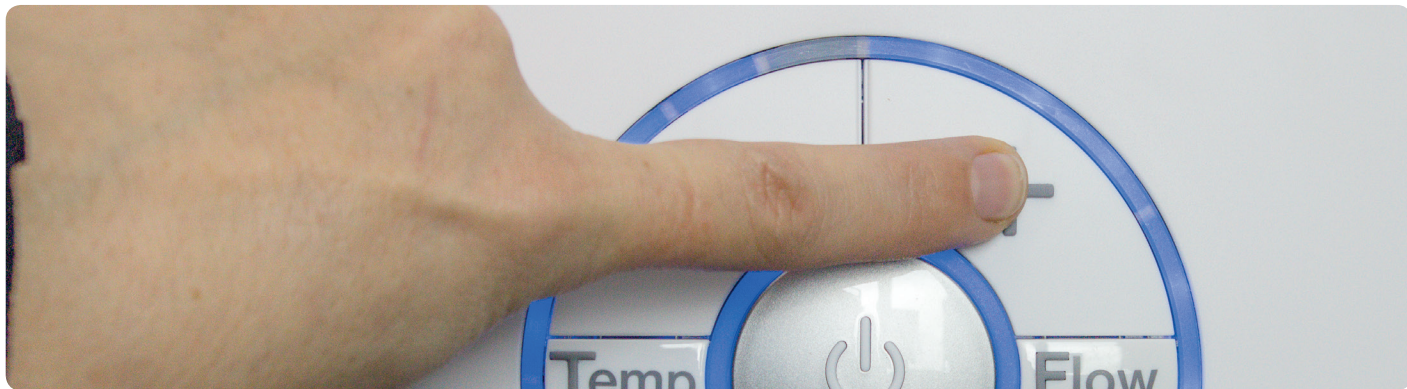
iCare Electric Shower User Guide



- + Ensure the shower's electric isolation switch or pull cord is on prior to attempting to use the shower unit
- + **To start** push the larger circular central button which has an illuminated light around it to activate the unit



- + To **increase the flow**, push the top right hand button. There are three flow settings on the iCare shower



- + To **decrease the flow** push the bottom right hand button



- + To **increase the water temperature** push the top left hand button



- + To **decrease the water temperature** push the bottom left hand button



- + The iCare is an electric shower unit that has a maximum temperature setting of 41° and will not go higher than this temperature unless set by the installer and requested by the landlords of the property
- + An electric shower does not provide instantaneous warm water as it has to heat up cold water supplied to the unit from the mains water supply
- + **To turn the unit off you must press the centre circular button again** (as you did to start) which when pressed will flash for a few seconds while it clears all hot water out of the heater canister before stopping
- + **NEVER** turn the unit off by the electrical isolation pull cord as this will make the unit go into emergency mode and it will not be able to be used again until fully cooled down
- + Please ensure that the shower hose is not twisted or contorted as it could restrict flow and cause the unit to switch off or warning light illuminate

AKW[®]
life. style. choice.



Wet Rooms Direct

Orderline

01685 898110

Orders & Quotes

orders@wetroomsdirect.net

Website

www.wetroomsdirect.net

